

Direction of INTRASOFT International to Software Development

*Dr. Christos
Georgousopoulos*

11th Panhellenic Conference on Informatics – PCI
2007

Outline

- **Company profile**
- **Software Development – focus on MDE approach**
- **ELLECTRA-WeB (*IST project*) – utilizing MDE**

INTRASOFT INTERNATIONAL S.A.

- **Leading European company in the field of ICT services** (*established in October 1996*)
- **Broad portfolio of business activities mainly in the public sector, including national & international organisations**
- **Employs 700 professionals working in Belgium, Luxembourg, Athens, and Romania 89% of which have postgraduate degrees, representing 17 different nationalities and mastering more than 15 languages**
- **Impressive organic growth.**
Consolidated organic revenue in 2006 reached 52.6 million (*2005: 46.4 million*)
with PBT (Profit Before Tax) of 4.5 million,
representing over 40% CAGR (Compound Annual Growth Rate).

INTRASOFT INTERNATIONAL S.A.

Since its establishment, INTRASOFT Intl. S.A. has focused on the public sector market, helping national and international government organizations to design and implement their IT application infrastructure and support services.

The focus of the company's research activities is at:

- **e-government**
- **medical information systems**
- **e-business**
- **content and knowledge management**
- **interoperability and integration technologies, and**
- **decision support systems.**

The company's offering is grouped along 4 service lines:

- **Application Development & System Integration**
- **Networking & Security Services**
- **e-Government Solutions & Managed Services**
- **Outsourcing, Consulting and Professional Services**

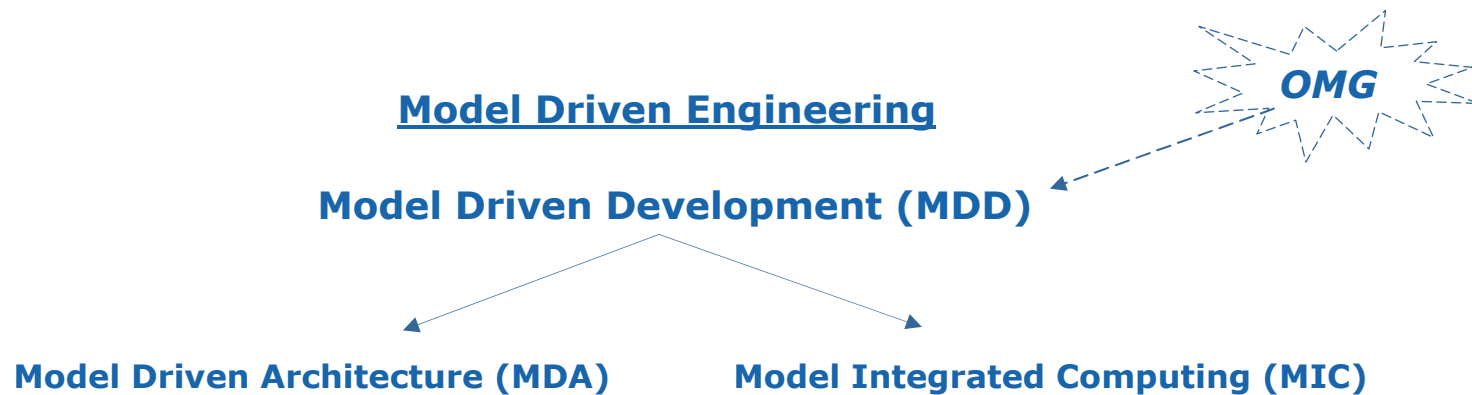
Software development

Process

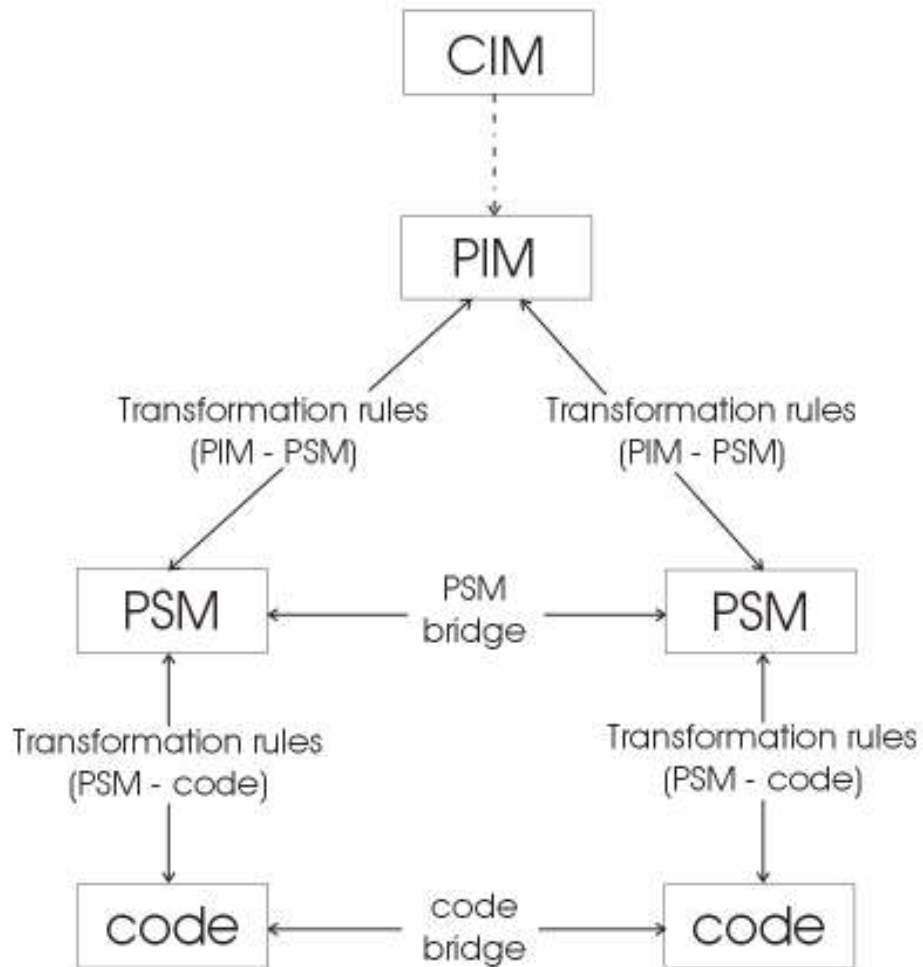
Analysis - Design - Coding - Testing - Deployment

Approach

- **code-centric approach** (*traditional approach*)
- **model-centric approach** (*revolutionary approach*)



Model Driven Development - workflow



CIM – Conceptual Model

PIM – Platform Independent Model

PSM – Platform Specific Model

Model Driven Development

Advantages

- Improves productivity
- Results in better code quality
- Increases portability & reusability
- Fosters interoperability
- Optimizes maintainability
- Testing & Simulation on early stage

Disadvantages

- limited support by CVS

ELLECTRA-WeB

(European Electronic Public Procurement Application Framework in the Western Balkan Region)

IST project co-funded by European Commission (FP6) - Contract No.045153

Scientific & technological objective:

**The development of an Open Source
electronic Public Procurement Application Framework**

**that facilitates the cost-effective implementation of
electronic Public Procurement solutions in the
Western Balkans region that are compliant with
the EC directives and EU best practices.**

<http://www.ellectra-web.eu>

ELLECTRA-WeB

Aim:

- Reduce development cost of ePP solutions
- Reduce development complexity
- Shorten development time
- Facilitate deployment and use
- Ensure compliance with EU directives

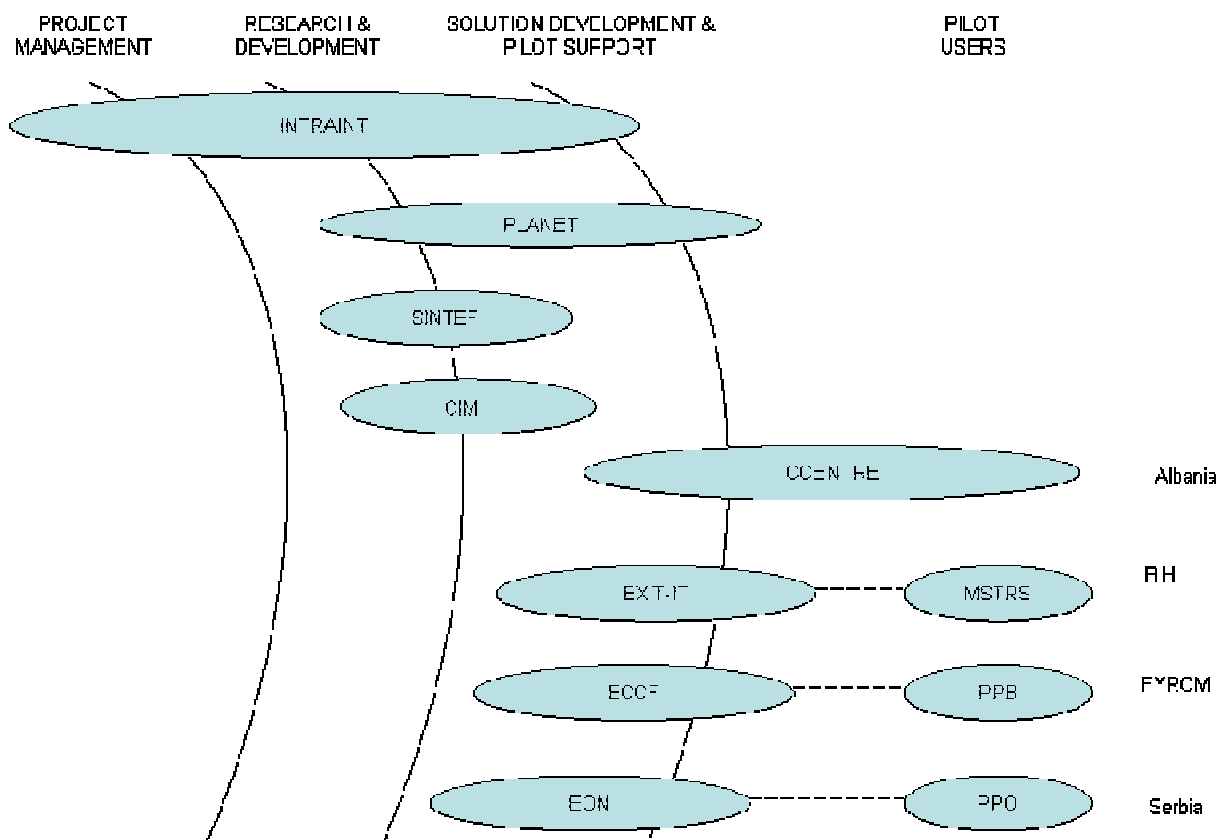
Approach:

Development of:

- an Open Source ePP Application Framework
- Supporting Guidelines for ePP Solutions Implementation

ELLECTRA-WeB

Partners involved



ELLECTRA-WeB

ELLECTRA-Web site:

<http://www.ellectra-web.eu>

Workshop (ELLECTRA-WeB & RAC-WeB)

Title: “eGovernment Initiatives in Western Balkan countries”

Date: Tuesday, 19 June 2007

Venue: Headquarters of Customs Administration of F.Y.R.O.M

Contact info:

INTRASOFT International S.A.

Ms. Iliana Qeyvanay
Assoc. Consultant Research & Innovation Development

Tel: +30 (210) 68.76484 Fax: +30 (210) 68.59166
E-mail: Iliana.Qeyvanay@intrasoft-intl.com



Thank you for your attention